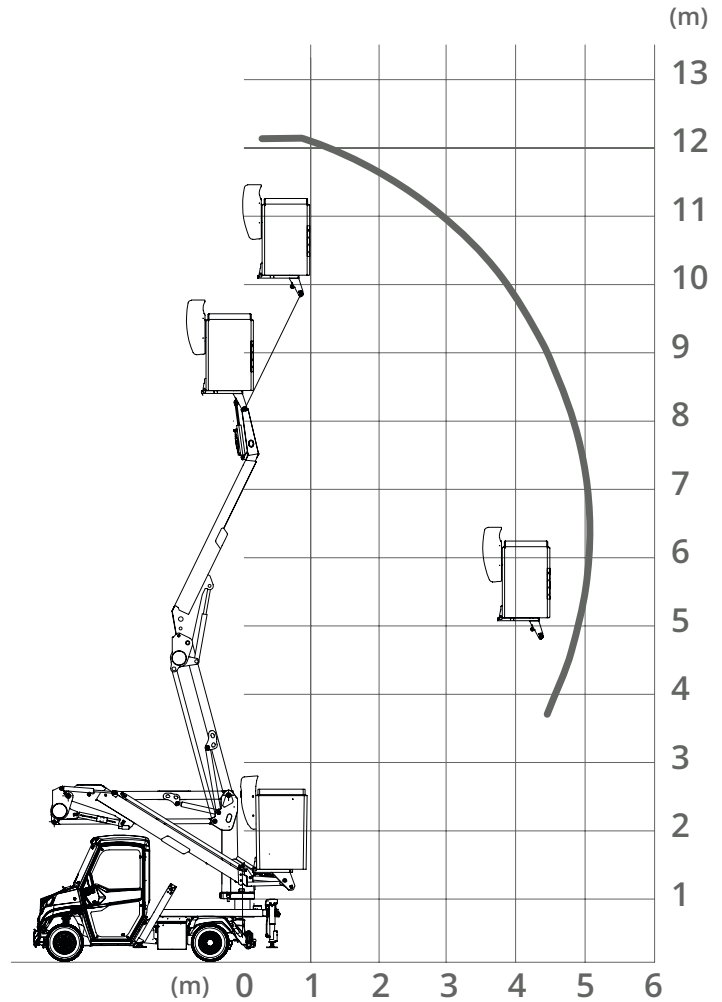
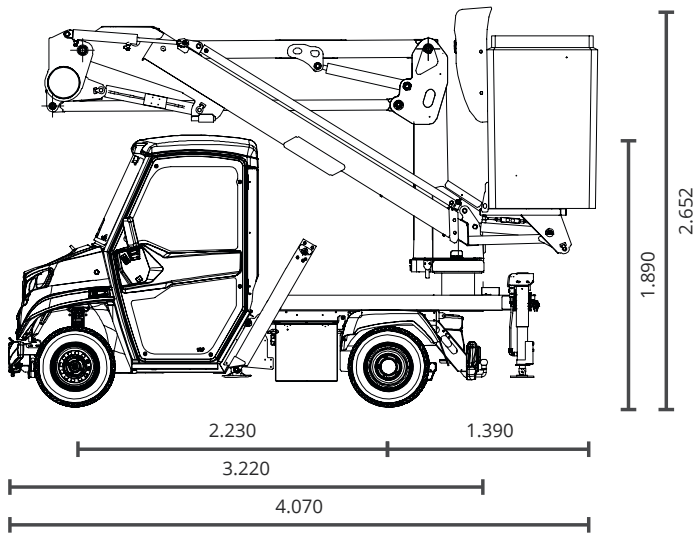


# MOBILE ELEVATING WORK PLATFORM



Fully electric equipment for all types of work at height where the protection of the environment and noise pollution is necessary, such as municipal maintenance of public lighting, traffic lights, signaling or indoor work. It has great features in a very small size.

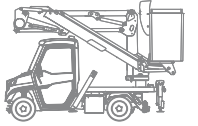
compatibles models	ATX340EH (long wheelbase versions)
N1 road homologation	•

## mobile elevating work platform

booms		articulated and telescopic type
maximum working height	[ m ]	12
height from base platform to basket	[ m ]	10
maximum lateral working outreach	[ m ]	5,1
vehicle + module: width with stabilizers spread	[ mm ]	2.700
made of polyester fiber with automatic levelling thanks to 1.000 V hydraulic and insulated cylinders		
basket: dimensions (length x width x height)	[ mm ]	750 x 750 x 1.100
basket: capacity (for a single person and tools)	[ kg ]	120

basket: access	a system that allows to the basket be lowered to the ground for easy access	
controls:	intuitive and easy to use controls obtaining proportional movements	
emergency controls	located in the fixed turret on the ground, emergency controls are priority over those of the basket	
rotation	[ ° ]	430° from the superstructure (it has a rotating movement driven by a hydraulic motor-reducer and protected with a brake valve)
stabilisers	four stabilising with independent control for fast and optimal positioning	
electric motor pump	[ W - V ]	2500 W - 48 V
set dimensions (length x width x height)	[ mm ]	4.070 x 1.500 x 2.652
residual load (available for tools and accessories)	[ kg ]	approx. 500

• standard   Δ optional   ! compatible but not type-approved for road circulation  
— not available



**NOTE**

**This module is powered by** the battery of the vehicle therefore can affect the autonomy of the vehicle itself. **For all the other data** refer to the technical specs of the model on which is fitted the module. **The technical specifications**, design and performance of the products listed in this technical sheet are indicative and may undergo modifications without forewarning.



Via Cile, 5  
35127 Padua | Italy



+39.049.8702400  
+39.049.761208



info@alke.com

**WWW**

www.alke.com



© 2021 Alkè

Rev. 210304



ISO 9001:2015 - BN17607/17301  
ISO 14001:2015 - BN17607/17302  
OHSAS 18001:2007 - BN17607/17303

• standard   Δ optional   ! compatible but not type-approved for road circulation  
— not available

The technical specifications, design and performance levels indicated in this technical data sheet are by way of example only and may be subject to modifications without prior notice.